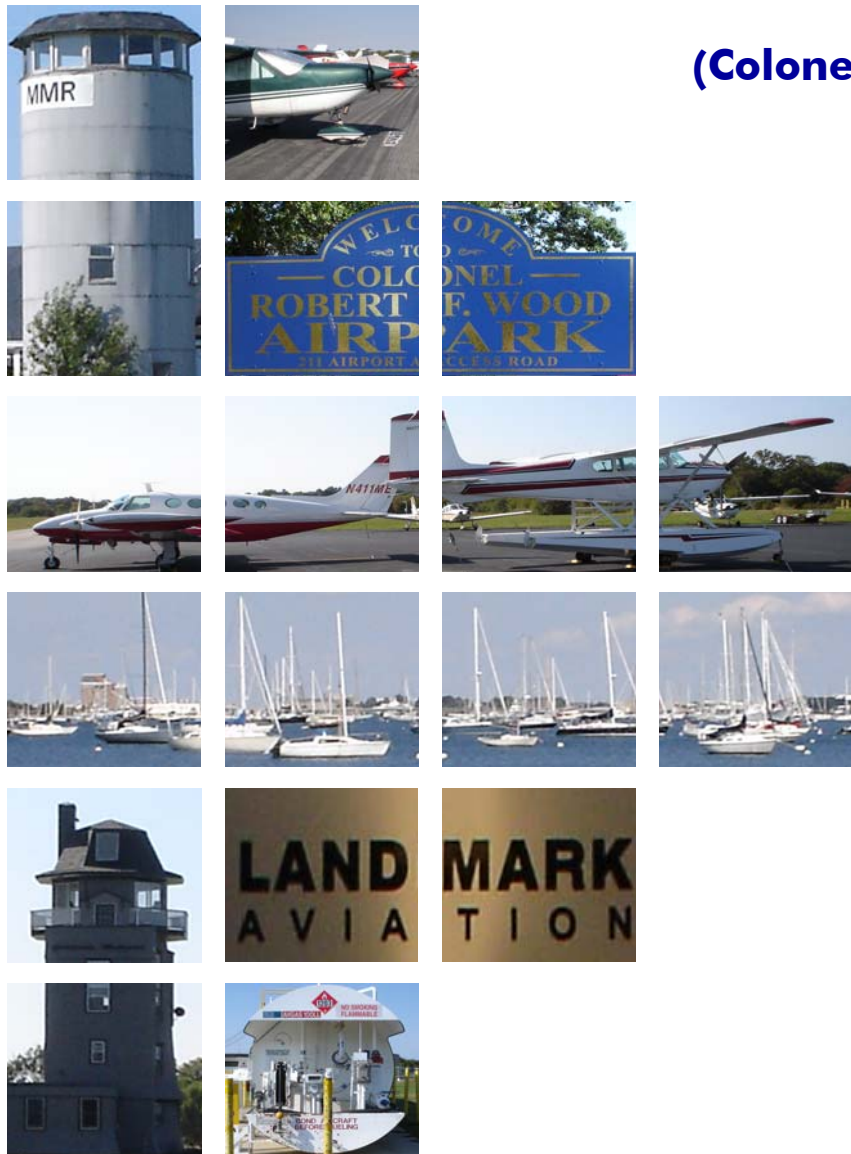


Draft

AIRPORT ENVIRONMENTAL ASSESSMENT

Newport State Airport (Colonel Robert F. Wood Airpark)



Prepared for:



Rhode Island Airport Corporation
2000 Post Road
Warwick, Rhode Island 02886-1533

Prepared by:

THE Louis Berger Group, INC.
20 Corporate Woods Boulevard
Albany, New York 12211-2370



May 14, 2009