

Rhode Island Airport Corporation
Aircraft Operations Report
4th Quarter 2004
(October, November, December)

Introduction

This report is prepared for the Rhode Island General Assembly in conformance with the Permanent Noise Monitoring Act of 1998. It contains statistical information on aircraft operations, activity levels by aircraft types, and noise complaints for the Fourth Quarter, 2004.

Permanent Noise Monitoring Act

In 1998, the Rhode Island Legislature enacted Title 1, Aeronautics, Chapter 1-5, Permanent Noise Monitoring Act – Aircraft Operations Monitoring System (AOMS). This Act requires the Rhode Island Airport Corporation (RIAC) to install an aircraft operations monitoring system. Once installed, RIAC is to collect and report on a quarterly basis detailed and summary information related to the operation of aircraft at Green Airport. This document is generated to meet those requirements.

The AOMS is a stand alone system which has 5 radar sensors deployed throughout the State of Rhode Island (see Figure 1). These sensors receive specific aircraft information from all aircraft with transponders operating within 20 miles of T. F. Green Airport. This information is delivered real-time to the Noise Program Manager where it is correlated daily and displayed on a computer screen. The data is archived for use in generating reports. Information collected includes; aircraft type, flight number, registration number, altitude, arrival/departure status and the origin or destination.

The use of five sensors throughout the state allows for a greater accuracy in identifying the flight tracks. This system is independent from the Federal Aviation Administration (FAA) air traffic control radar. The movement of aircraft to and from an airport is the responsibility of FAA Air Traffic Control.

**Rhode Island Airport Corporation
Aircraft Operations Report
4th Quarter 2004**
(October, November, December)

Aircraft Operations Monitoring System Radar Sensors

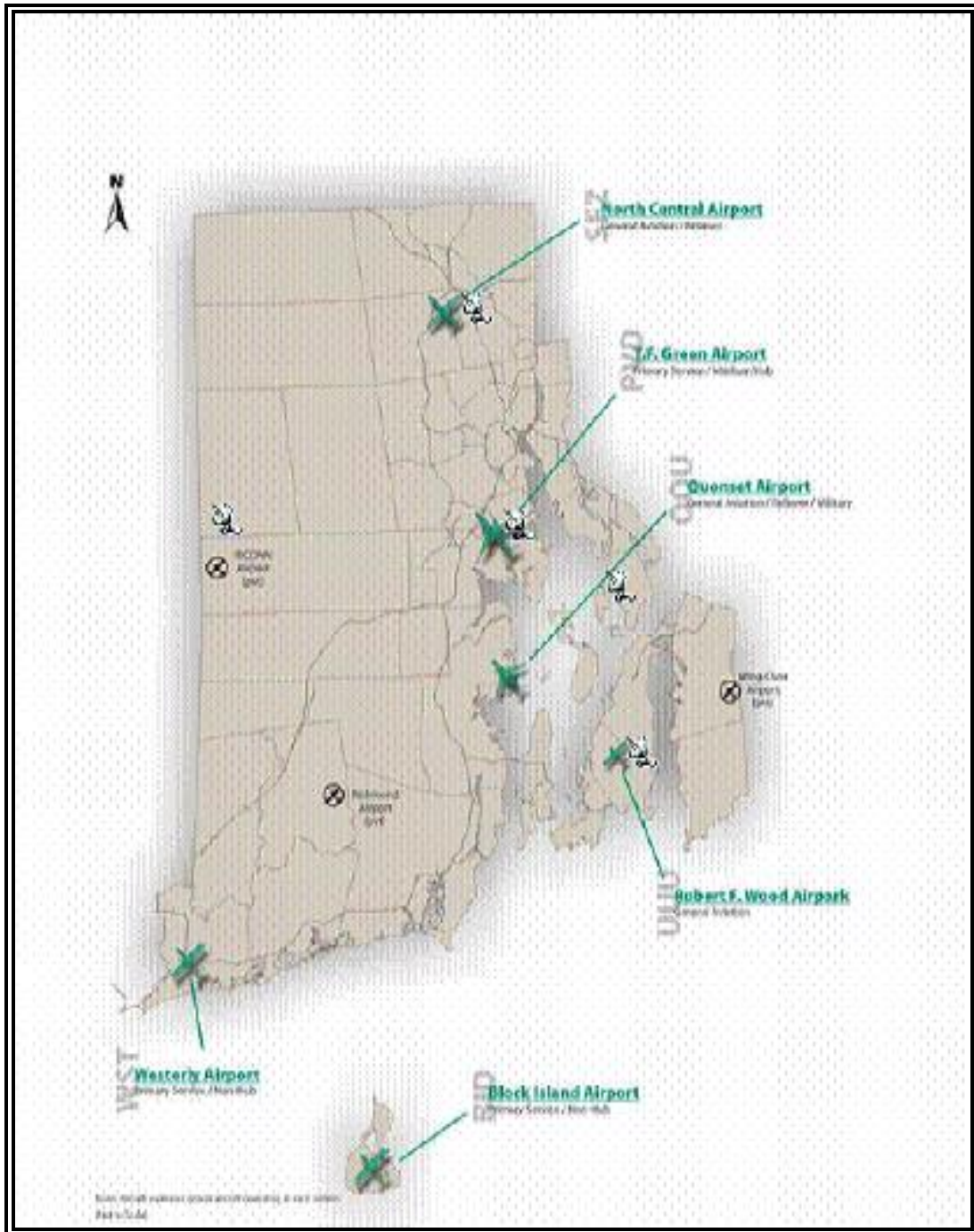


Figure 1

**Rhode Island Airport Corporation
Aircraft Operations Report
4th Quarter 2004
(October, November, December)**

Operations and Passengers

It is important to note that from July 6, 2004 through October 6, 2004, Runway 16/34 was closed due to resurfacing. The numbers in this quarterly report reflect the runway closure.

In 2004 two new low cost carriers joined the operations of T.F. Green Airport. Independence Air joined in August with Spirit Airlines joining in October. This report reflects their addition.

As seen in Table 1, the Aircraft Operations Monitoring System (AOMS) collected 26,529 flight tracks during this reporting period. There were 13,294 departures and 13,235 arrivals for an average 288 operations per day.

Total Number of Operations by Runway

Runway	Departures		Arrivals		Total	
	# of Ops	%	# of Ops	%	# of Ops	%
23	5,189	39%	5,479	41%	10,668	40%
5	5,382	40%	5,064	38%	10,446	39%
16	658	5%	365	3%	1,023	4%
34	2,065	16%	2,327	18%	4,392	17%
Total	13,294	100%	13,235	100%	26,529	100%

Table 1

Departures occurred predominantly to the north on Runway 5 with the majority of the arrivals from the north on Runway 23. With the start of the prevailing winter winds, Runway 34 was in use 17% of the time. Figure 2, an aerial view of the airport, identifies the number of operations on each runway end:

**Rhode Island Airport Corporation
Aircraft Operations Report
4th Quarter 2004
(October, November, December)**

Aerial View of Total Operations by Runway End

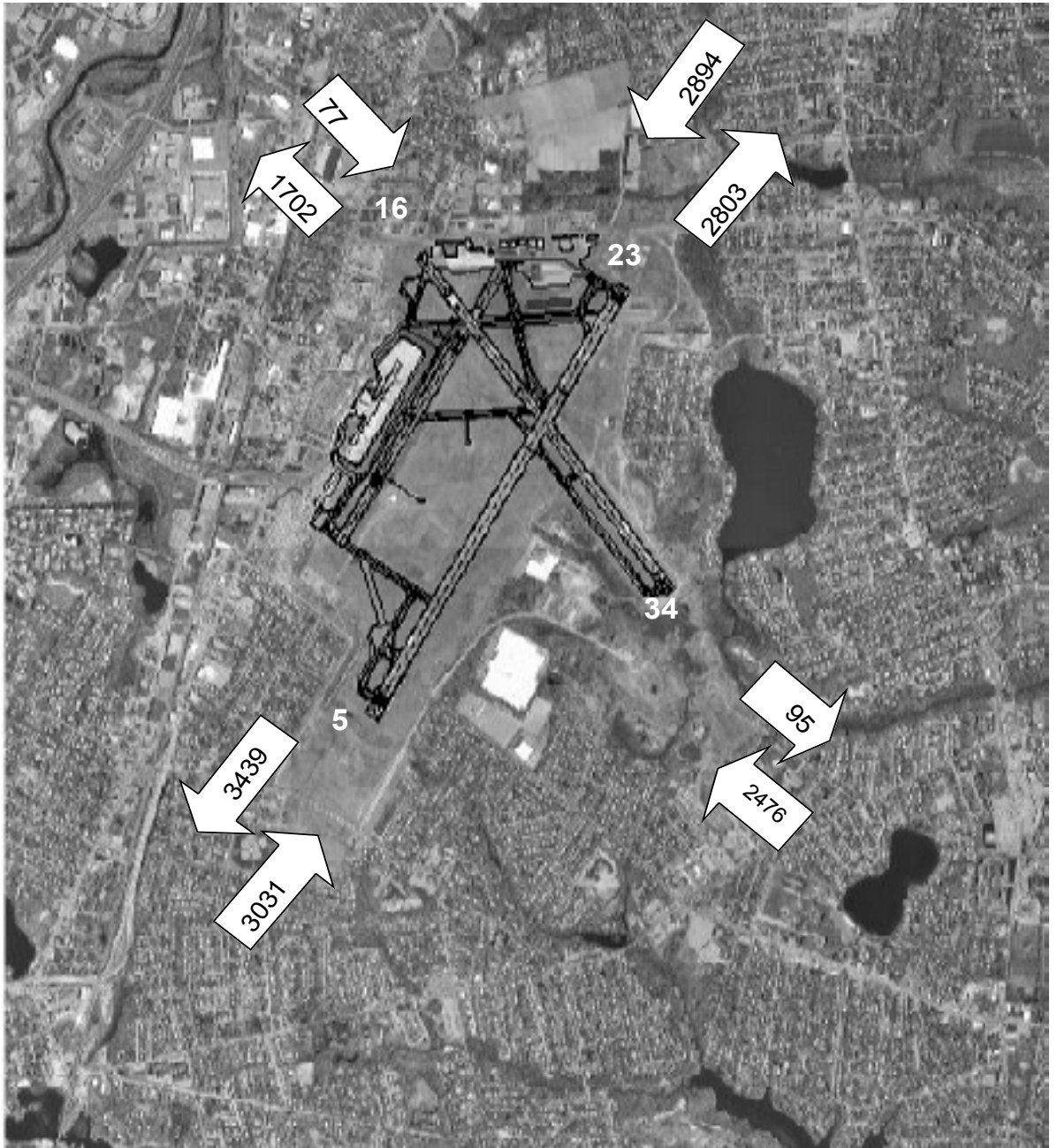
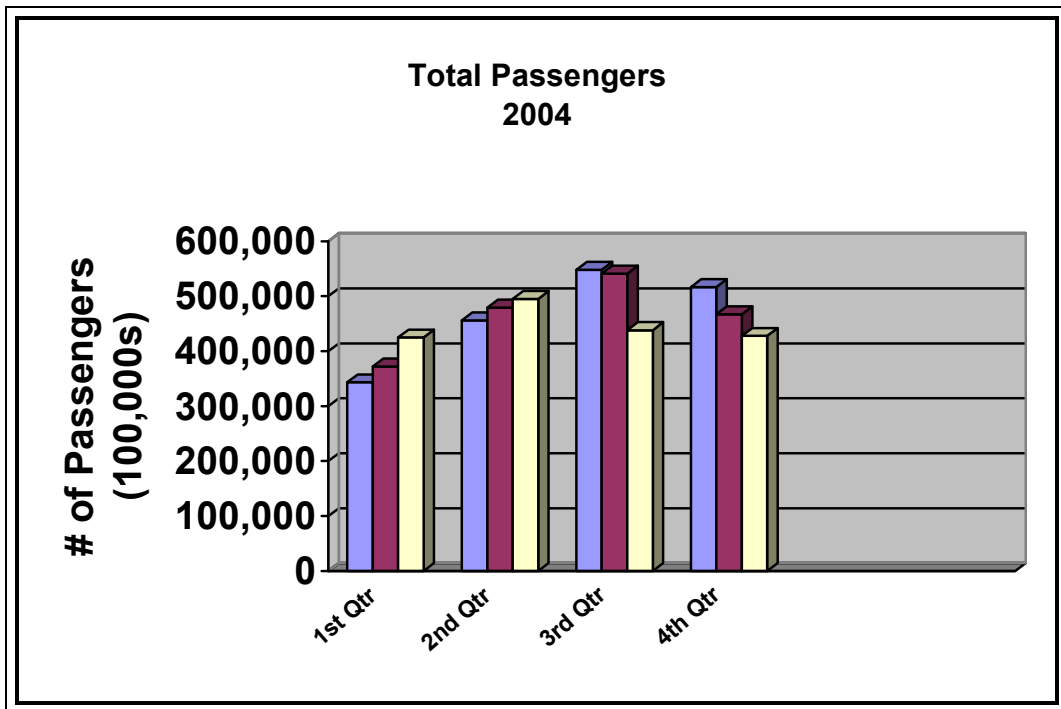


Figure 2

**Rhode Island Airport Corporation
Aircraft Operations Report
4th Quarter 2004**
(October, November, December)

In the 4th Quarter of 2004, T.F. Green served approximately 1,411,490 passengers. December at 427,793 reflects 30% usage and October with a total of 516,677 reflects a high of 37% of the passenger activity. With 5,509,186 passengers, 2004 was the second busiest year at T.F. Green - 21,207 passengers shy of the record set in 2001. Table 2 shows the steady increase in the number of passengers that have utilized the airport via scheduled air carriers, commuter and charter flights for the year 2004.



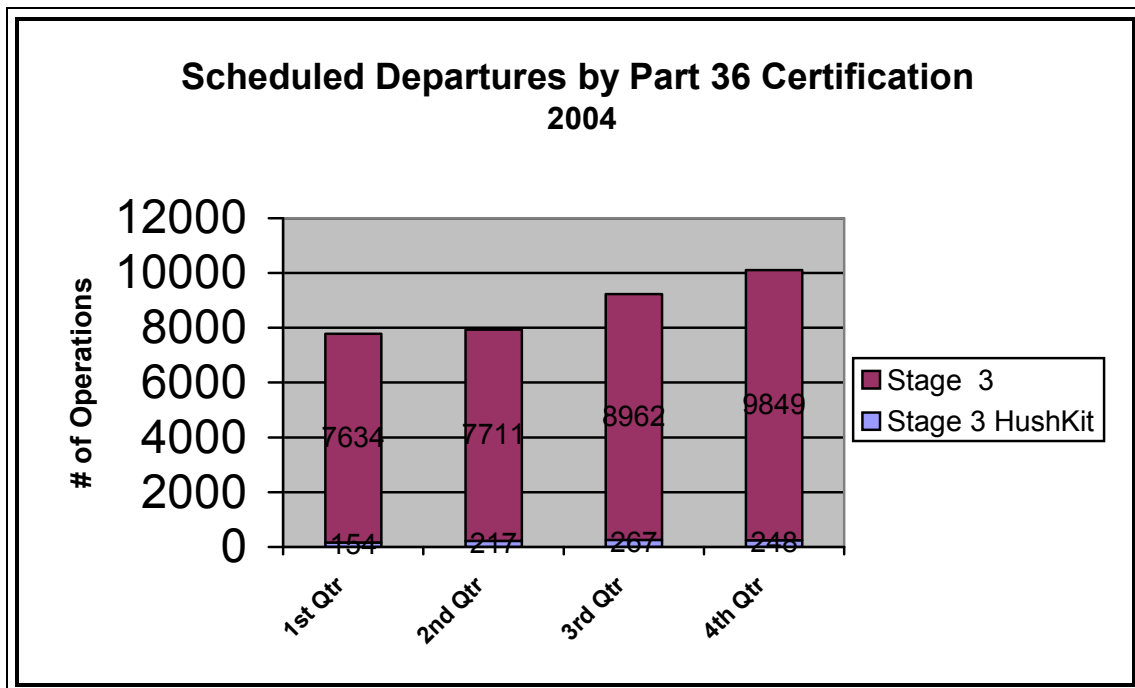
Source: RIAC 2004 Passenger Activity Report

Table 2

**Rhode Island Airport Corporation
Aircraft Operations Report
4th Quarter 2004**
(October, November, December)

Part 36 Certification

During the 4th Quarter of 2004 there were approximately 10,097 departures of commercial aircraft from T. F. Green Airport (Table 3). This number includes airline, cargo, and charter aircraft operations. The overall percentage of pure Stage 3 aircraft operating at T. F. Green reached an overall high of 98% during this quarter.



Source: RIAC, 2004. Operations include airline, charter and cargo aircraft

Table 3

**Rhode Island Airport Corporation
Aircraft Operations Report
4th Quarter 2004
(October, November, December)**

The airlines accounted for 9,778 (99%) of the 9,790 commercial departures from T. F. Green Airport, (Table 4). The airlines are operating at 99% pure Stage 3 aircraft and 1% Stage 3 compliant (hushkitted Stage 2 aircraft). There is an average of 106.4 departures a day by all commercial operators. All airline operations are scheduled to occur between 6:00 a.m. and midnight. Table 4 also illustrates each airline's contribution to daily flights and percentage use of the quietest aircraft.

4th Quarter Airline Departures by Part 36 Certification

Airline	Stage 3 Hushkit		Pure Stage 3		Total Ops	Avg. Daily Departures
	# of Departures	%	# of Departures	%		
American	0	0%	798	100%	798	8.6
Continental	0	8%	728	100%	728	7.9
Delta	0	0%	744	100%	744	8.0
Independence	0	0%	651	100%	651	7.0
Northwest	12	2%	594	98%	606	6.5
Southwest	0	0%	2960	100%	2960	32.2
Spirit	0	0%	280	100%	280	3.4
US Air	0	0%	2105	100%	2105	22.8
United	0	0%	918	100%	918	10.0
Total	12	1%	9778	99%	9790	106.4

Source: RIAC Airlines Reports, 2004

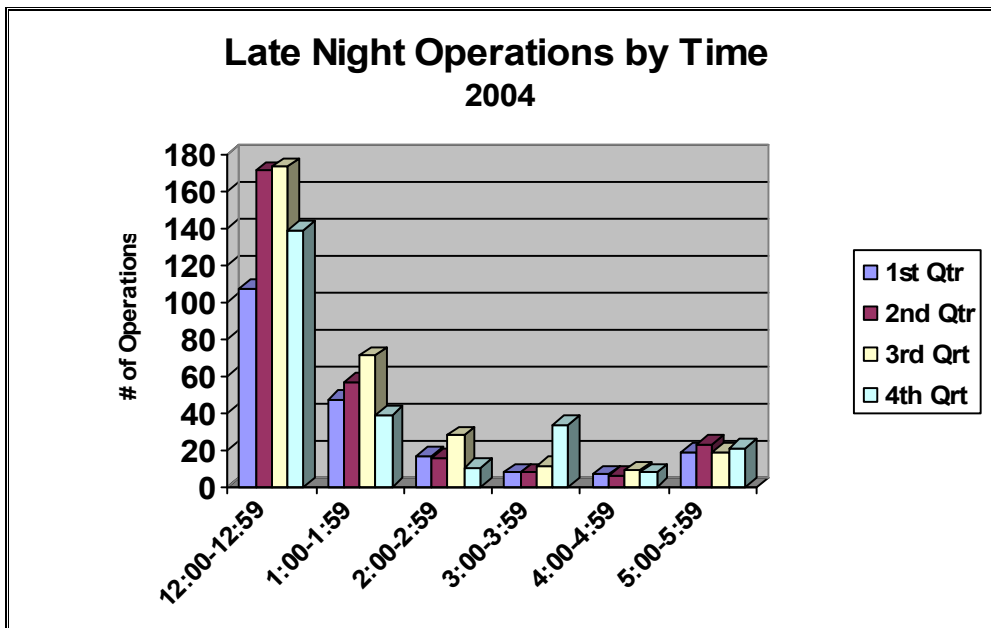
Table 4

**Rhode Island Airport Corporation
Aircraft Operations Report
4th Quarter 2004
(October, November, December)**

Late Night Operations (Midnight – 6:00 a.m.)

RIAC has implemented a voluntary nighttime curfew for operations between midnight and 6:00 a.m. Working with the airlines, no flights are scheduled during this time period however, should a flight be delayed for weather or mechanical reasons, it will continue to operate.

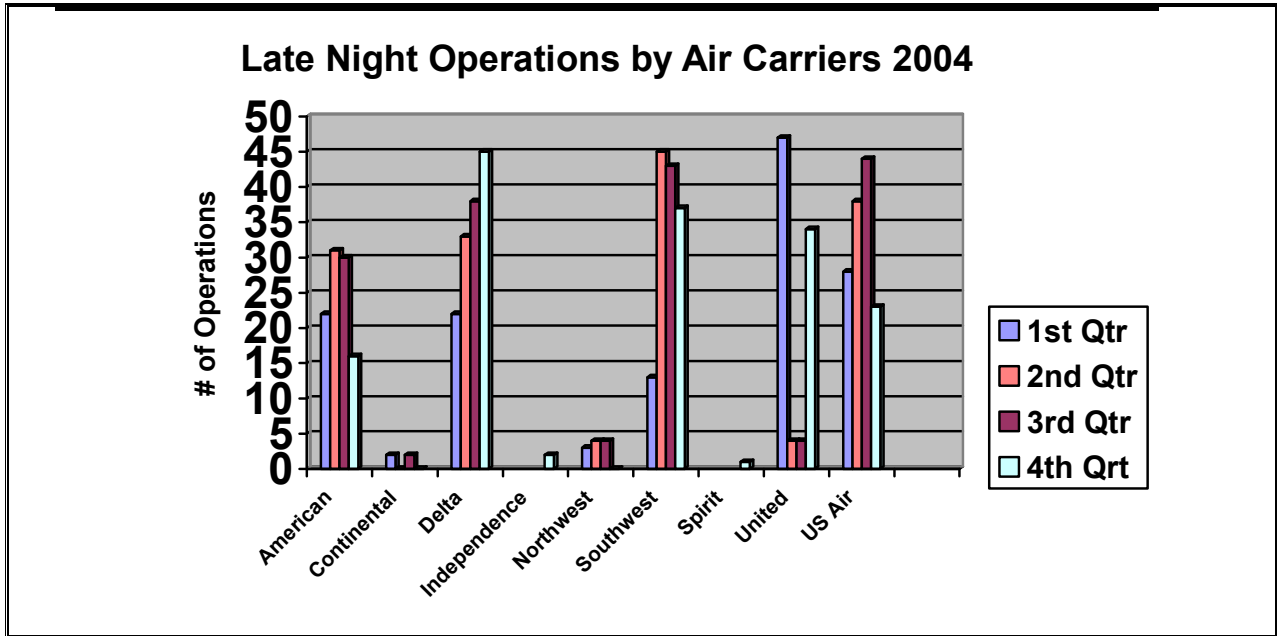
Scheduled commercial airlines conducted the greatest number of late night operations, closely followed by general aviation, (privately owned aircraft). Commercial airlines had 158 operations during curfew hours. The majority of late night operations, 139 or 55%, occurred between midnight and 1:00 a.m. These operations were mainly arrivals (Table 5).



Source: RIAC Operations Log, 2004

Table 5

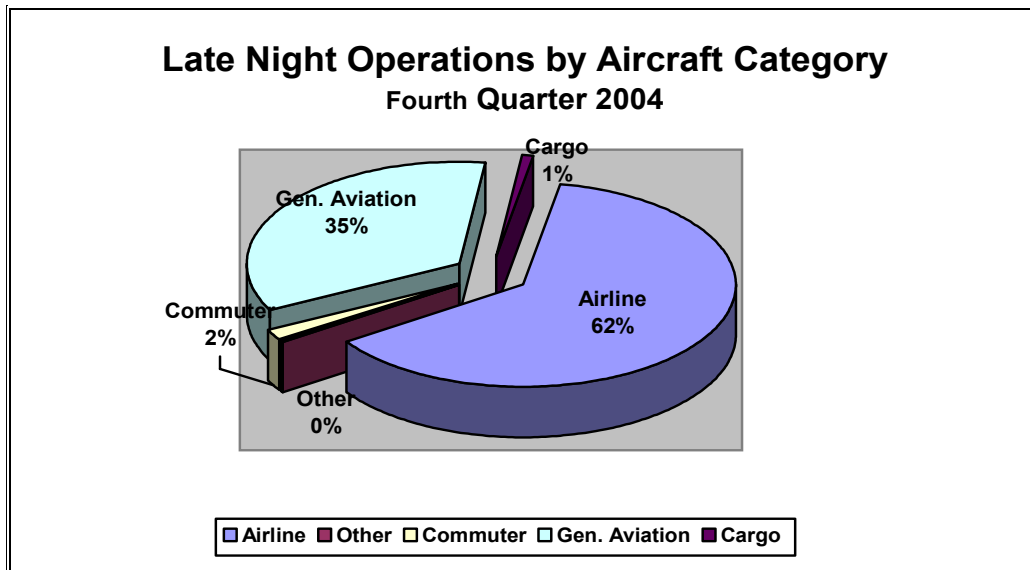
**Rhode Island Airport Corporation
Aircraft Operations Report
4th Quarter 2004**
(October, November, December)



Source: RIAC Operations Logs, 2004

Table 6

Airline operations comprise 63% of the total nighttime operations. These late night arrivals are predominantly arrivals of delayed flights occurring between midnight and 1:00 a.m. RIAC continues to work with the airlines to decrease the number of late night operations. Delayed flights typically occur because of weather or air traffic delays.



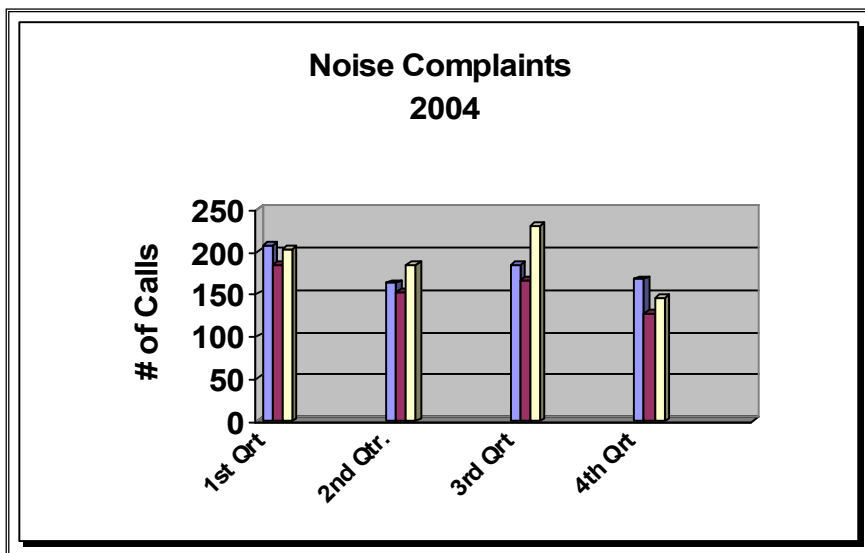
Source: RIAC Operations Logs, 2004

Table 7

**Rhode Island Airport Corporation
Aircraft Operations Report
4th Quarter 2004
(October, November, December)**

Noise Complaints

RIAC has instituted several methods for citizens concerned about aircraft noise to voice their opinions. RIAC is committed to minimizing the effects of aircraft generated noise on the Warwick and Cranston Communities through the use of operational procedures and noise mitigation programs. Citizens can call the noise hotline and leave a message, submit a complaint via the web page or call the noise office directly.



Source: RIAC Complaints Log, 2004

Table 8

As seen in Table 8, during the Fourth Quarter 2004, RIAC received 440 complaints from 275 callers. These calls are a compilation of all three complaint methods. 187 complaints or 43% were received from 1 household via our web page.