

## Monthly Airport Passenger Activity Summary

July 2013

	Calendar Year Basis					
	July 2013	July 2012	Percent Change	Year to Date 2013	Year to Date 2012	Percent Change
Total Enplaned	178,596	170,796	4.57%	1,096,542	1,065,639	2.90%
Total Passengers	356,974	342,922	4.10%	2,197,884	2,138,157	2.79%

## Enplaned Passengers by Airline

	July 2013	July 2012	Difference 13 vs 12	Percent Change	Year to Date 2013	Year to Date 2012	Difference 13 vs 12	Percent Change
Air Canada (Air Georgian Ltd)	-	524	(524)	-100.00%	419	2,215	(1,796)	-81.08%
Continental Express (Express Jet)	-	-	-	n/a	-	6,756	(6,756)	-100.00%
Continental Express (Chautauqua)	-	-	-	n/a	-	1,046	(1,046)	-100.00%
Continental Express (Colgan)	-	-	-	n/a	-	3,336	(3,336)	-100.00%
Continental Express (Commutair)	-	-	-	n/a	-	9,004	(9,004)	-100.00%
Delta (Chautauqua)	-	136	(136)	-100.00%	-	6,448	(6,448)	-100.00%
Delta (Comair)	-	1,589	(1,589)	-100.00%	-	1,589	(1,589)	-100.00%
Delta (Compass)	-	2,114	(2,114)	-100.00%	2,406	4,053	(1,647)	-40.64%
Delta (Express Jet)	2,716	1,694	1,022	60.33%	6,037	11,274	(5,237)	-46.45%
Delta (Go Jet)	-	-	-	n/a	-	100	(100)	-100.00%
Delta (Endevour Air formerly Pinnacle)	6,500	6,188	312	5.04%	47,323	45,681	1,642	3.59%
Delta (Shuttle America)	-	62	(62)	-100.00%	-	179	(179)	-100.00%
Delta (Skywest)	2,127	-	2,127	n/a	3,626	-	3,626	n/a
Delta Airlines	12,257	12,402	(145)	-1.17%	70,635	71,155	(520)	-0.73%
Hyannis Air Services (Cape Air)	1,206	1,453	(247)	-17.00%	1,745	2,170	(425)	-19.59%
JetBlue Airways	12,359	-	12,359	n/a	82,342	-	82,342	n/a
Republic Airlines (Charters)	94	-	94	n/a	564	-	564	n/a
Southwest Airlines	83,106	89,255	(6,149)	-6.89%	524,703	550,617	(25,914)	-4.71%
United Airlines	3,662	3,295	367	11.14%	19,669	23,037	(3,368)	-14.62%
United Express (Chautauqua)	4,768	3,757	1,011	26.91%	17,781	4,765	13,016	273.16%
United Express (Colgan)	-	4,835	(4,835)	-100.00%	-	29,923	(29,923)	-100.00%
United Express (Commutair)	1,612	621	991	159.58%	7,790	2,568	5,222	203.35%
United Express (Express Jet)	387	3,495	(3,108)	-88.93%	17,794	18,222	(428)	-2.35%
United Express (Go Jet)	-	-	-	n/a	-	243	(243)	-100.00%
United Express (Republic)	2,851	-	2,851	n/a	8,603	-	8,603	n/a
United Express (Shuttle America)	-	-	-	n/a	1,497	-	1,497	n/a
United Express (Mesa Airlines)	6,000	3,114	2,886	92.68%	31,959	23,053	8,906	38.63%
US Air Express (Mesa Airlines)	614	-	614	n/a	2,734	140	2,594	1852.86%
US Air Express (Piedmont)	324	-	324	n/a	667	3,321	(2,654)	-79.92%
US Air Express (PSA)	-	136	(136)	-100.00%	1,134	179	955	533.52%
US Air Express (Republic)	14,646	12,500	2,146	17.17%	82,841	78,745	4,096	5.20%
US Air Express (Air Wisconsin)	3,886	4,874	(988)	-20.27%	29,115	20,777	8,338	40.13%
US Airways	19,426	18,554	872	4.70%	133,610	142,664	(9,054)	-6.35%
Charters	55	198	(143)	-72.22%	1,548	2,379	(831)	-34.93%
	178,596	170,796	7,800	4.57%	1,096,542	1,065,639	30,903	2.90%

## Total Passengers by Airline

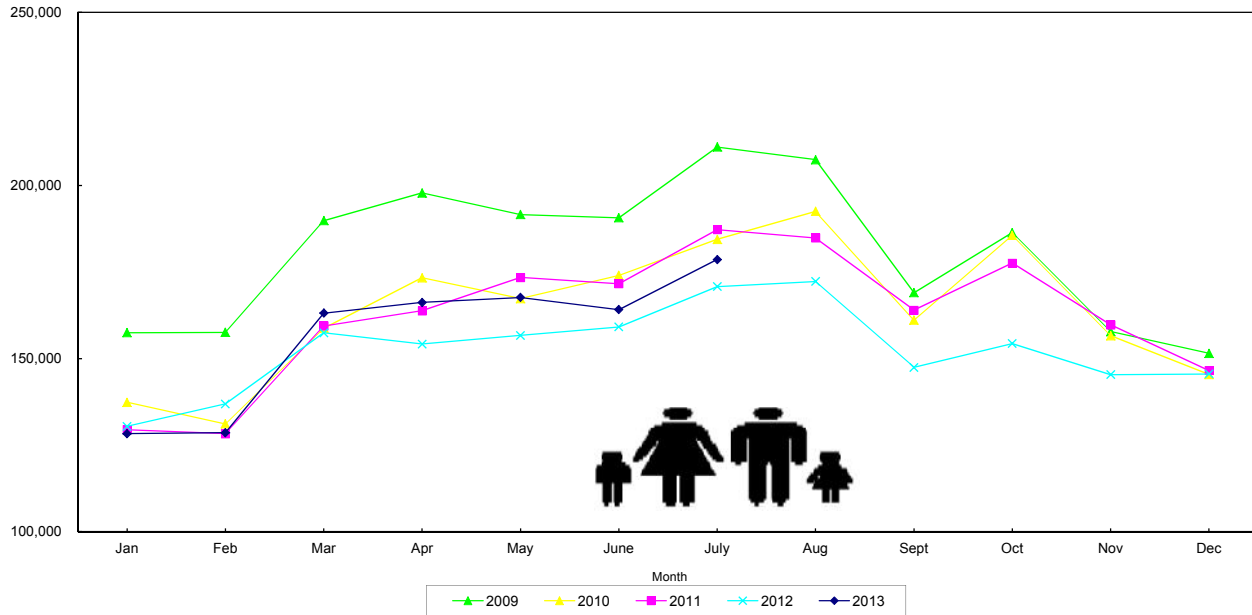
	July 2013	July 2012	Difference 13 vs 12	Percent Change	Year to Date 2013	Year to Date 2012	Difference 13 vs 12	Percent Change
Air Canada (Air Georgian Ltd)	-	1,074	(1,074)	-100.00%	825	4,486	(3,661)	-81.61%
Continental Express (Express Jet)	-	-	-	n/a	-	13,340	(13,340)	-100.00%
Continental Express (Chautauqua)	-	-	-	n/a	-	2,406	(2,406)	-100.00%
Continental Express (Colgan)	-	-	-	n/a	-	7,096	(7,096)	-100.00%
Continental Express (Commutair)	-	-	-	n/a	-	17,721	(17,721)	-100.00%
Delta (Chautauqua)	-	263	(263)	-100.00%	54	14,144	(14,090)	-99.62%
Delta (Comair)	-	3,031	(3,031)	-100.00%	-	3,072	(3,072)	-100.00%
Delta (Compass)	-	4,319	(4,319)	-100.00%	5,004	8,163	(3,159)	-38.70%
Delta (Express Jet)	5,394	3,533	1,861	52.67%	12,290	22,818	(10,528)	-46.14%
Delta (Go Jet)	-	-	-	n/a	-	193	(193)	-100.00%
Delta (Mesaba)	-	-	-	n/a	-	61	(61)	-100.00%
Delta (Endevour Air formerly Pinnacle)	12,920	12,343	577	4.67%	95,349	91,023	4,326	4.75%
Delta (Shuttle America)	-	135	(135)	-100.00%	73	440	(367)	-83.41%
Delta (Skywest)	4,214	-	4,214	n/a	7,202	-	7,202	n/a
Delta Airlines	24,422	24,614	(192)	-0.78%	141,040	140,489	551	0.39%
Hyannis Air Services (Cape Air)	2,414	3,027	(613)	-20.25%	3,400	4,248	(848)	-19.96%
JetBlue Airways	24,435	-	24,435	n/a	165,732	-	165,732	n/a
Republic Airlines (Charters)	188	-	188	n/a	1,207	-	1,207	n/a
Southwest Airlines	165,124	179,353	(14,229)	-7.93%	1,048,845	1,103,325	(54,480)	-4.94%
United Airlines	7,280	7,038	242	3.44%	40,039	47,899	(7,860)	-16.41%
United Express (Chautauqua)	9,245	7,597	1,648	21.69%	35,606	9,584	26,022	271.52%
United Express (Colgan)	-	9,850	(9,850)	-100.00%	-	61,301	(61,301)	-100.00%
United Express (Commutair)	3,337	1,192	2,145	179.95%	16,568	5,476	11,092	202.56%
United Express (Express Jet)	791	6,838	(6,047)	-88.43%	35,722	36,385	(663)	-1.82%
United Express (Go Jet)	-	-	-	n/a	-	473	(473)	-100.00%
United Express (Republic)	6,226	-	6,226	n/a	18,606	-	18,606	n/a
United Express (Shuttle America)	-	-	-	n/a	2,922	-	2,922	n/a
United Express (Mesa Airlines)	11,931	6,007	5,924	98.62%	62,094	44,879	17,215	38.36%
US Air Express (Mesa Airlines)	1,195	-	1,195	n/a	5,188	280	4,908	1752.86%
US Air Express (Piedmont)	708	-	708	n/a	1,438	6,568	(5,130)	-78.11%
US Air Express (PSA)	-	271	(271)	n/a	2,143	364	1,779	488.74%
US Air Express (Republic)	30,022	24,970	5,052	20.23%	166,218	159,121	7,097	4.46%
US Air Express (Air Wisconsin)	8,259	9,539	(1,280)	-13.42%	60,112	41,527	18,585	44.75%
US Airways	38,759	37,532	1,227	3.27%	267,063	286,461	(19,398)	-6.77%
Charters	110	396	(286)	-72.22%	3,144	4,814	(1,670)	-34.69%
	356,974	342,922	14,052	4.10%	2,197,884	2,138,157	59,727	2.79%

# RHODE ISLAND AIRPORT CORPORATION

## T. F. GREEN AIRPORT

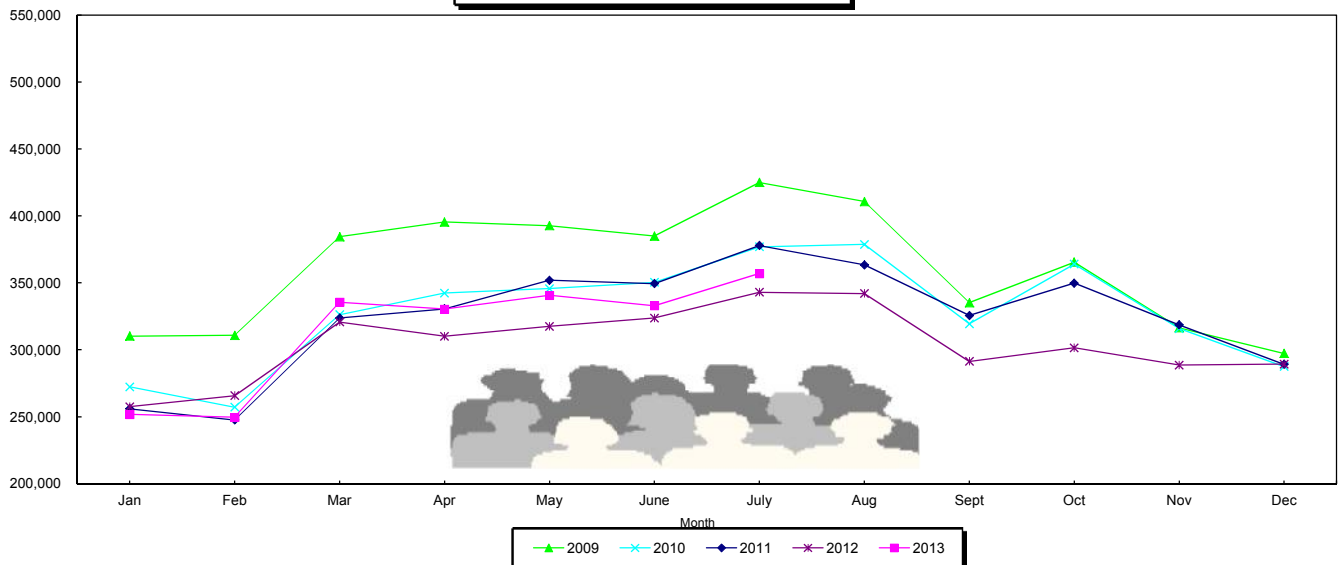
08/20/13

### ENPLANED PASSENGERS



Year	Jan	Feb	Mar	Apr	May	June	July	Aug	Sept	Oct	Nov	Dec	Total
2009	157,477	157,573	189,817	197,807	191,596	190,653	211,083	207,465	169,032	186,350	157,792	151,501	2,168,146
2010	137,372	131,135	158,778	173,325	167,298	174,013	184,400	192,516	161,065	185,570	156,605	145,430	1,967,507
2011	129,441	128,318	159,394	163,786	173,426	171,629	187,246	184,841	164,003	177,584	159,746	146,565	1,945,979
2012	130,457	136,917	157,438	154,185	156,691	159,155	170,796	172,279	147,423	154,347	145,382	145,532	1,830,602
2013	128,330	128,570	163,092	166,199	167,634	164,121	178,596						1,096,542

### TOTAL PASSENGERS



Year	Jan	Feb	Mar	Apr	May	June	July	Aug	Sept	Oct	Nov	Dec	Total
2009	310,211	310,771	384,509	395,499	392,750	384,924	424,974	410,788	335,146	365,450	316,400	297,319	4,328,741
2010	272,254	257,143	326,256	342,365	345,670	350,394	376,879	378,736	319,391	364,045	315,784	287,506	3,936,423
2011	255,890	247,594	323,660	330,562	351,894	349,461	377,843	363,360	325,689	349,829	318,559	289,207	3,883,548
2012	257,480	265,769	320,754	310,034	317,482	323,716	342,922	341,979	291,277	301,463	288,537	289,324	3,650,737
2013	251,791	249,554	335,578	330,423	340,639	332,925	356,974						2,197,884

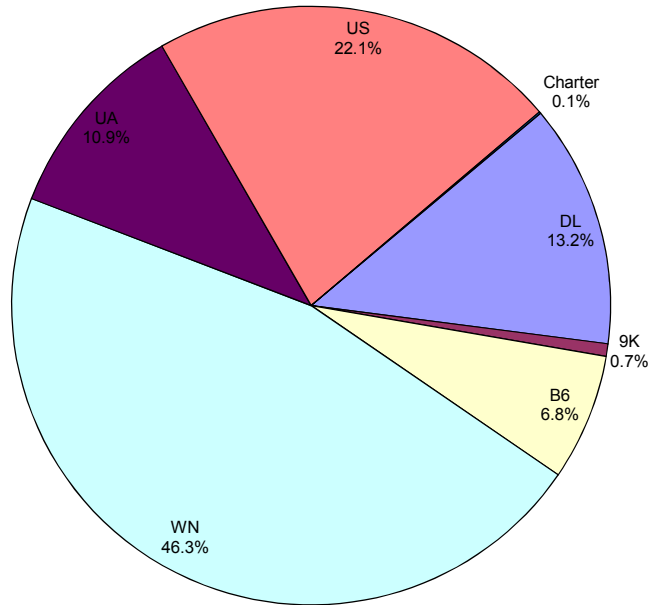
# RHODE ISLAND AIRPORT CORPORATION

## T. F. GREEN AIRPORT

July 2013

TOTAL PASSENGERS

### Market Share



Airline	Code	Total Passengers	Market Share
Delta Airlines	DL	46,950	13.2%
Hyannis Air	9K	2,414	0.7%
JetBlue Airways	B6	24,435	6.8%
Southwest Airlines	WN	165,124	46.3%
United Airlines	UA	38,810	10.9%
US Airways	US	78,943	22.1%
Charters	Charter	298	0.1%
Total		356,974	100.0%



Rhode Island Airport Corporation

**AIRPORT OPERATIONS COUNT  
FOR THE CALENDAR YEAR ENDING DECEMBER, 2013**

Month-Year	ITINERANT(1)					LOCAL(2)			TOTAL Operations (3)
	AC(a)	AT(b)	GA(c)	MI(d)	Total	CI(a)	MI(b)	Total	
January-13	2,380	1,169	1,058	26	4,633	634	9	643	5,276
February-13	2,212	946	842	18	4,018	518	19	537	4,555
March-13	2,872	1,058	1,302	6	5,238	752	12	764	6,002
April-13	2,796	1,098	1,353	36	5,283	711	11	722	6,005
May-13	2,714	1,422	1,469	22	5,627	677	2	679	6,306
June-13	2,712	1,726	1,423	28	5,889	704	0	704	6,593
July-13	3,043	1,871	1,383	17	6,314	806	8	814	7,128
August-13					0			0	0
September-13					0			0	0
October-13					0			0	0
November-13					0			0	0
December-13					0			0	0
<b>Total 2013</b>	<b>18,729</b>	<b>9,290</b>	<b>8,830</b>	<b>153</b>	<b>37,002</b>	<b>4,802</b>	<b>61</b>	<b>4,863</b>	<b>41,865</b>

(1) **ITINERANT** - Those aircraft that land or depart the airport

(a) **AC** - Air Carrier is defined as an aircraft having a passenger seating configuration of more than 30 seats

(b) **AT** - Air Taxi is defined as an aircraft having a maximum passenger seating configuration of 30 seats or less

(c) **GA** - General Aviation is defined as a rotorcraft or fixed wing aircraft

(d) **MI** - Military aircraft

(2) **LOCAL** - Those aircraft that remain within the local traffic area

(a) **CI** - Civilian aircraft

(b) **MI** - Military aircraft

(3) **TOTAL OPERATIONS** – Monthly total of itinerant plus local traffic

**Individual Airline Statistics  
July-13**

<u>Airlines</u>	<u>Total Passengers</u>	<u>Total Mail &amp; Freight</u>
Cape Air	2,414	0
Delta Airlines	24,422	13,236
Delta Connection (Express Jet)	5,394	0
Delta Connection (Endeavor Air formerly Pinnacle)	12,920	0
Delta Connection (Skywest)	4,214	0
Federal Express	0	1,268,927
JetBlue Airways	24,435	1,219
North Star Aviation	100	0
Republic Airlines (Charters)	188	0
Southwest Airlines	165,124	96,604
United Airlines	7,280	888
United Express (Chautauqua)	9,245	0
United Express (Commutair)	3,337	0
United Express (Express Jet)	791	0
United Express (Mesa)	11,931	0
United Express (Republic)	6,226	0
United Parcel Service	0	601,973
US Airways	38,759	8,069
US Air Express (Air Wisconsin)	8,259	0
US Air Express (Mesa)	1,195	0
US Air Express (Piedmont Airlines)	708	0
US Air Express (Republic Airlines)	30,022	0
Wiggins Airways	10	227,158
Charters	0	0
<b>Total Month</b>	<b>356,974</b>	<b>2,218,074</b>

**Year To Date**

<u>Airlines</u>	<u>Total Passengers</u>	<u>Total Mail &amp; Freight</u>
Air Georgian (Air Georgian Ltd.)	825	0
Cape Air	3,400	0
Delta Airlines	141,040	100,952
Delta Connection (Chautauqua)	54	0
Delta Connection (Compass)	5,004	0
Delta Connection (Express Jet)	12,290	0
Delta Connection (Endeavor Air formerly Pinnacle)	95,349	0
Delta Connection (Shuttle America)	73	0
Delta Connection (Skywest)	7,202	0
Federal Express	0	8,326,712
JetBlue Airways	165,732	9,025
Miami Air (Charters)	318	0
North Star Aviation	1,438	0
Republic Airlines (Charters)	1,207	0
Southwest Airlines	1,048,845	684,458
United Airlines	40,039	7,700
United Express (Chautauqua)	35,606	0
United Express (Commutair)	16,568	0
United Express (Express Jet)	35,722	0
United Express (Mesa)	62,094	0
United Express (Republic)	18,606	0
United Express (Shuttle America)	2,922	0
United Parcel Service	0	4,164,751
US Airways	267,063	55,776
US Air Express (Air Wisconsin)	60,112	0
US Air Express (Mesa)	5,188	0
US Air Express (Piedmont Airlines)	1,438	0
US Air Express (PSA Airlines)	2,143	35
US Air Express (Republic Airlines)	166,218	0
Wiggins Airways	12	862,547
Charters	1,376	0
<b>Total YTD</b>	<b>2,197,884</b>	<b>14,211,956</b>

# Rhode Island Airport Corporation

## Passengers and Cargo

July, 2013 vs. July, 2012

	<u>Jul-13</u>	<u>Jul-12</u>	<u>Numerical Change</u>	<u>Percentage Change</u>
<b><u>PASSENGERS</u></b>				
Enplaned	178,596	170,796	7,800	4.57%
Deplaned	<u>178,378</u>	<u>172,126</u>	<u>6,252</u>	<u>3.63%</u>
<b>Total</b>	<b>356,974</b>	<b>342,922</b>	<b>14,052</b>	<b>4.10%</b>
<b><u>TOTAL CARGO (lbs.)</u></b>				
Enplaned	859,652	696,704	162,948	23.39%
Deplaned	<u>1,358,422</u>	<u>1,118,814</u>	<u>239,608</u>	<u>21.42%</u>
<b>Total</b>	<b>2,218,074</b>	<b>1,815,518</b>	<b>402,556</b>	<b>22.17%</b>

### Year To Date

	<u>2013 YTD</u>	<u>2012 YTD</u>	<u>Numerical Change</u>	<u>Percentage Change</u>
<b><u>PASSENGERS</u></b>				
Enplaned	1,096,542	1,065,639	30,903	2.90%
Deplaned	<u>1,101,342</u>	<u>1,072,518</u>	<u>28,824</u>	<u>2.69%</u>
<b>Total</b>	<b>2,197,884</b>	<b>2,138,157</b>	<b>59,727</b>	<b>2.79%</b>
<b><u>TOTAL CARGO (lbs.)</u></b>				
Enplaned	5,368,072	4,301,258	1,066,814	24.80%
Deplaned	<u>8,843,884</u>	<u>8,189,299</u>	<u>654,585</u>	<u>7.99%</u>
<b>Total</b>	<b>14,211,956</b>	<b>12,490,557</b>	<b>1,721,399</b>	<b>13.78%</b>